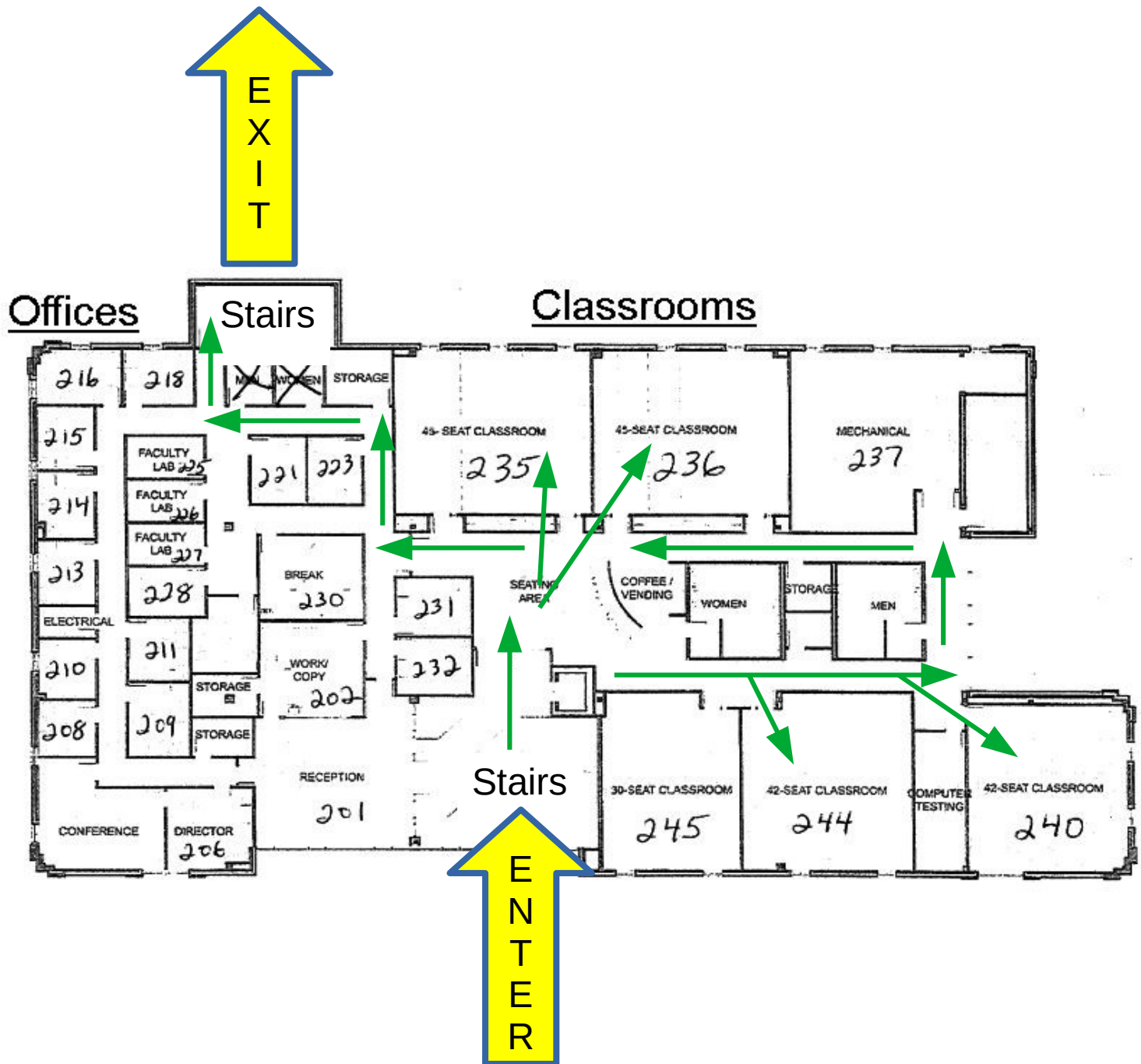


One-way traffic through Health and Human Sciences #2 (Carter 2)

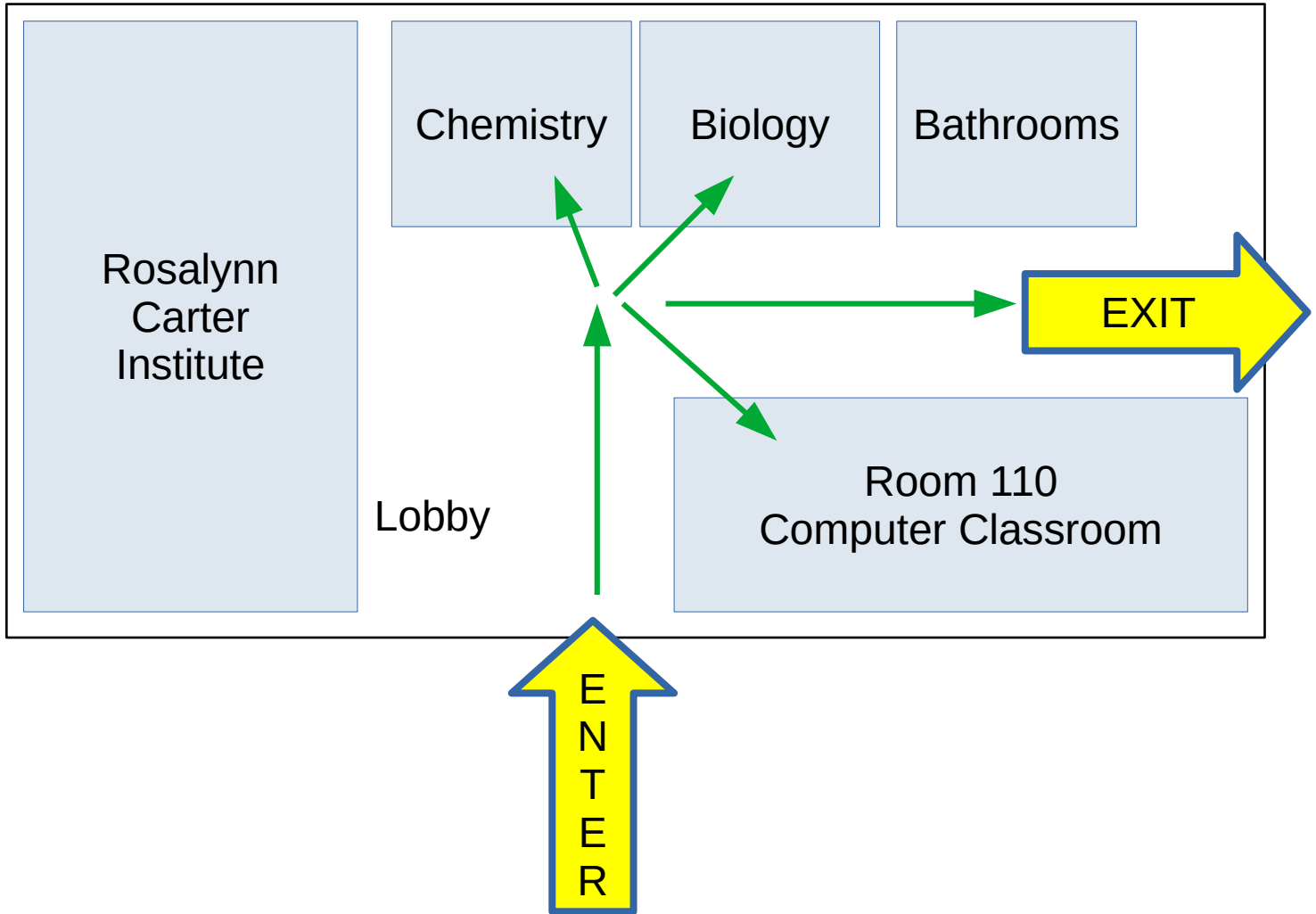
Second Floor:



Notes:

- Faculty offices are off-limits.
- The computer lab is closed.
- The secretary's reception area is closed.

First Floor:



Important safety guidelines

- Follow the above diagrams to aim for a one-way traffic flow through the building.
- Wearing a mask is mandatory.
- Try to maintain a distance of six feet or more from other people.
- The bathrooms are limited to one person at a time.
- Bring your own water. Do not use the water fountain.
- Sanitizing your desk space area is recommended.
- Try to avoid crossing paths with other students as you exit.