

NETWORKING AND BUILDING CONNECTIONS

Judy Orton Grissett, Ph.D.

Director of the Office of
Experiential Learning



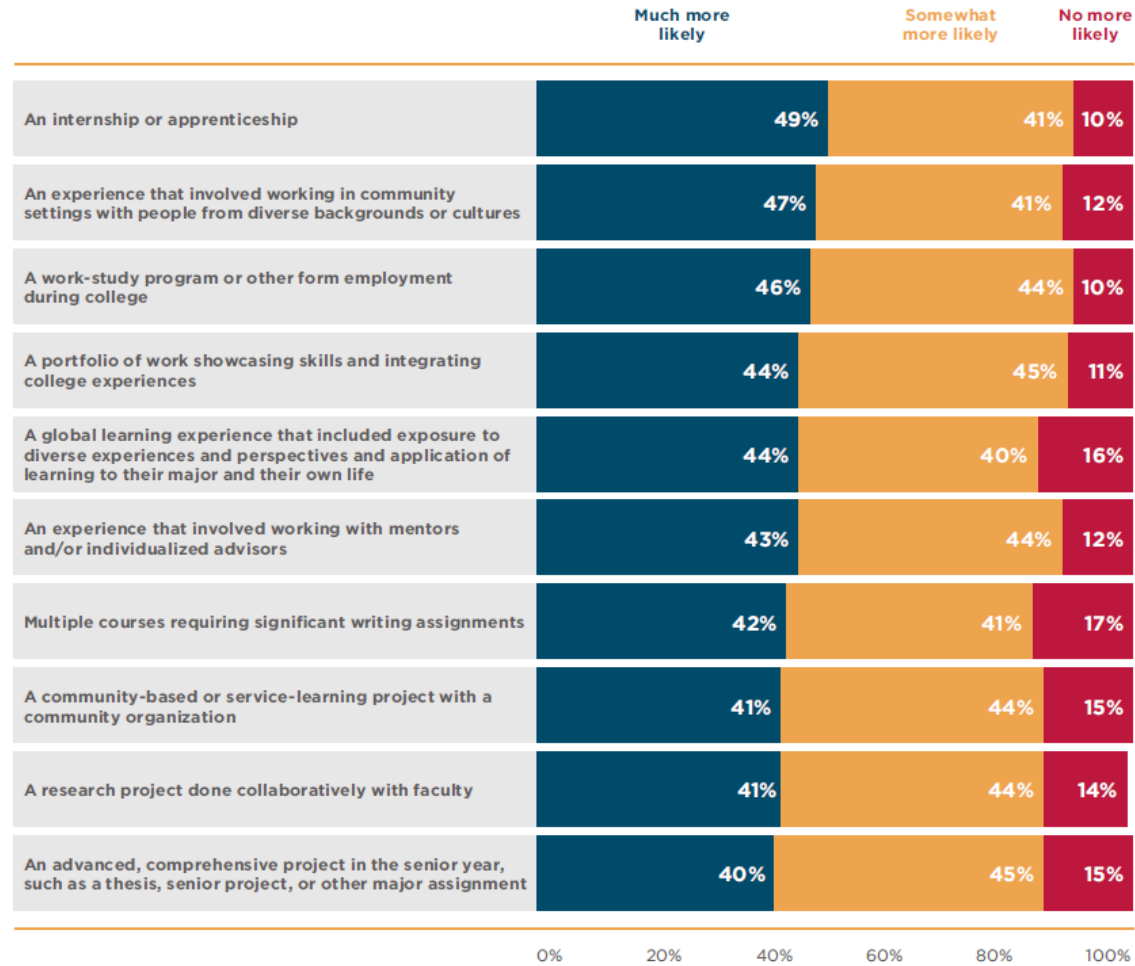
GEORGIA SOUTHWESTERN
STATE UNIVERSITY

Relationships are key!

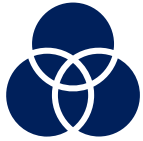
- The relationships you have built at GSW with faculty, staff, friends, and with others in the surrounding community will be a valuable tool as you continue to network and build connections throughout your career.

FIGURE 7

Employers value applied experiences, but internships lead the list of what makes employers “much more likely to consider” hiring a candidate.



Benefits of doing an internship



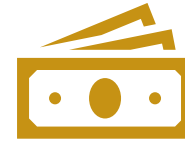
Determine whether a field is right (or not right) for you



Can give you an edge in finding a job after graduation



Looks good on your graduate school or job applications



Earn course credit

Sample internship experiences

Leading group activities at an after-school program

Writing web content

Assisting with maintenance of records

Conducting assessments

“Shadowing” employees

Sitting in on meetings

Compiling information to write brochures

Setting up an internship



FIELD OF STUDY



LOCATION



APPLICATION PROCESS



Finding an internship

- Work with advisor or internship/field experience supervisor from your area
- Contact Office of Experiential Learning
- Online resources, such as LinkedIn or Handshake

When should I do an internship?



Junior or senior year
(partly depends on major)



Fall, summer, or spring

Highlighting your experience



Resumes



Interviews

Resume Example

Biology Intern, April 2018 – July 2018

Flint RiverQuarium, Albany, GA

- Food Prep for all aquarium animals
- Basic maintenance of tanks, pumps, and sumps
- Basic cleaning duties: glass, acrylic, floors, kitchens
- Animal care, including medicinal administration, feeding/watering

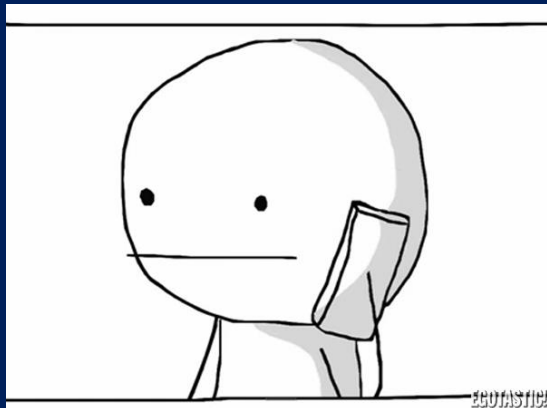
Psychology Intern, April 2018 – July 2018

First Option Care, Thomasville, GA

- Administrative duties: bank deposits, filing, mailing, organizing
- Patient Advocacy through educational opportunities: videos, questionnaire development, pamphlet distribution
- Basic cleaning duties
- Basic maintenance: lights, vents, parking lot painting

Professional Representation

- Dress
- Cell phone use/voicemail
- Email
- Online Reputation & Social Media





Develop an
online presence

Develop an Online Presence

- Up to 80% of employers will do an online search of their employees.
- Here are some places to establish an online presence:
 - E-Portfolios
 - Social media pages
 - Linked In
 - Handshake
 - GSW Merit Pages
 - Keep your Alumni Association account updated

E-Portfolios

E-portfolios showcase students' skills, experiences, and learning with artifacts and reflective writing for a specific audience (e.g., employer)



Include

Papers

Active learning
experiences

Reflective writings

Resume

Why E-Portfolios?

Showcase your work online

- Education
- Experience
- Course projects and papers

Set yourself apart from others

Website design is a valued skill

Some examples: [Auburn University](#)

E-Portfolios

E-portfolio examples:

- [Auburn University](#)

E-Portfolio Builders:

- [Google Sites](#) (has great set of resources for building e-portfolios, including benefits and a [step-by-step guide](#))
- [Foliospaces](#)
- [Wix](#)
- [Weebly](#)



Linked In

- Go to <https://www.linkedin.com/>
- Create a Linked In profile
- Benefits of linked in:
 - Find jobs
 - Network with others
 - Showcase skills and experience



 **Handshake**



SAVANNAH HALL

Majoring in Political Science (Pre-Law)
Georgia Southwestern State University
From Blakely, GA



Follow Savannah

EDUCATION

Georgia Southwestern State University
National Connections Academy

SAVANNAH IN THE NEWS

[Savannah Hall of Blakely makes Fall 2020 Dean's List at Georgia Southwestern State University](#)

Savannah Hall, a resident of Blakely, made the Fall 2020 Dean's List at Georgia Southwestern State University and was among 632 students recognized for scholastic achievement. To be eligible for t...
December, 18 2020 -  Verified by [Georgia Southwestern State University](#)

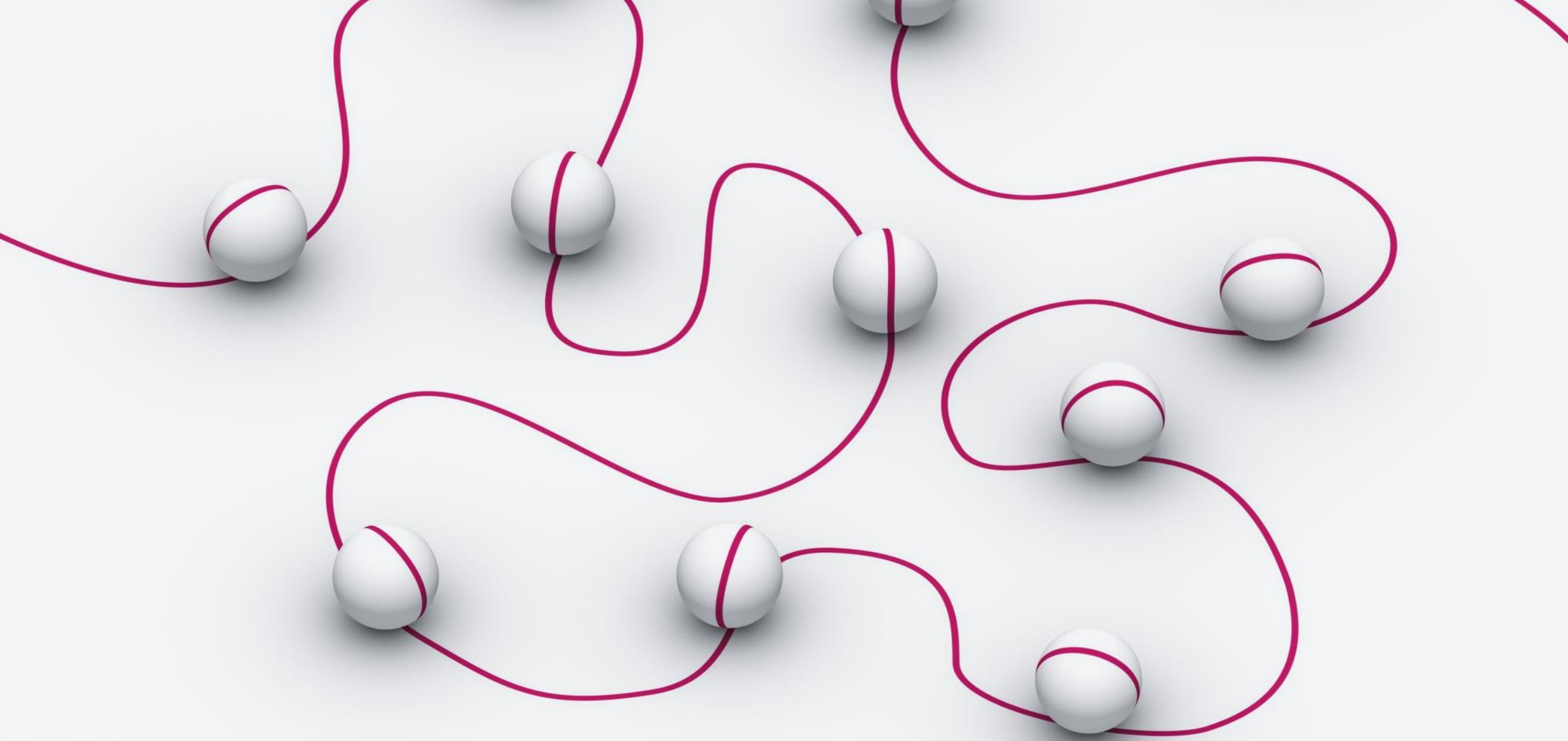
[Savannah Hall inducted into Alpha Lambda Delta national honor society](#) 

Nineteen students at Georgia Southwestern State University (GSW), including Savannah Hall of Blakely, were officially inducted into the Alpha Lambda Delta national honor society on Thursday, Octobe...
October, 19 2020 -  Verified by [Georgia Southwestern State University](#)

Show More

BADGES AWARDED





Network, network, network....

Networking with Others

- Student organizations
- Classmates
- Faculty and staff
- Alumni
- Campus and off-campus employers
- Conferences





* Louis Stokes Alliances for Minority Participation (LSAMP)

- The Louis Stokes Alliances for Minority Participation (LSAMP) program assists universities and colleges in their efforts to significantly increase the numbers of minority students matriculating into and successfully completing high quality degree programs in science, technology, engineering and mathematics (STEM) disciplines.
- At GSW, these include Biology, Chemistry, Computer Science and Mathematics.
- Successful applicants receive a stipend and the opportunity
 - Financial Support in the form of a Stipend
 - Support for Undergraduate Research Experiences
 - Support for Travel
 - Academic and Advisory support
 - Mentoring

To apply, go to: <https://www.gsw.edu/academic-resources/lsamp/>

**Connect with Others
(especially those who are
different than you)**



STUDY ABROAD



Benefits

- Network with others globally
- Expand worldview
- Enhance career opportunities
- Discover new things about your own culture
- Develop life skills
- Higher GPA
- ***GSW Alumni Association hosts international trips, too!***

Travel internationally

- Benefits of International Travel
 - Network with others globally
 - Expand worldview
 - Enhance career opportunities
 - Discover new things about your own culture
 - Develop life skills
- GSW Alumni Association hosts international trips





MAY 16-31, 2022- STUDY ABROAD TRIP TO NEPAL

- Experience the Himalayan Mountains
- Visit UNESCO heritage sites, including birthplace of Buddha
- Learn about cultures of Nepal
- Adventure safari in the Nepalese rainforest
- Make a difference by helping rebuild a local school



Summer 2023 programs

- **USG Goes Global (Europe):**
 - Edinburgh, Scotland
 - Germany
 - London, England
 - [Madrid, Spain](#)
 - Paris, France
 - Porto, Portugal
 - Waterford, Ireland



Get out there!

- **Volunteer, get involved with your community**
 - Great way to meet people, build connections, while making a difference
- **Attend professional conferences**
 - Many free or local conferences in state, region, or online
- **Stay in touch with faculty and staff after graduation**
 - They can write letters of recommendation
 - May be able to provide you with job or graduate school connections or leads
- **Become an active alumni through the GSW Alumni Association!**

Volunteer with different populations

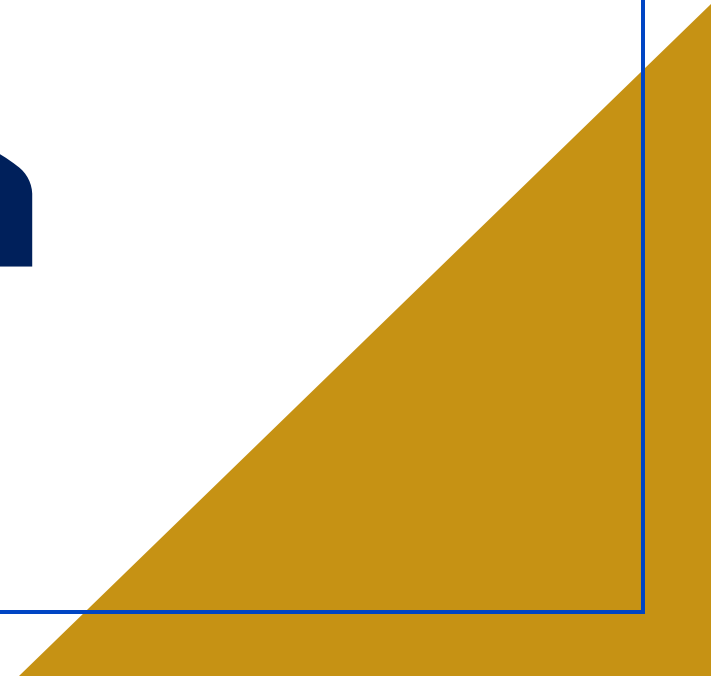
- Volunteering is a great way to
 - Build skills
 - Meet others
 - Make a difference
- Volunteer Match is a good place to start (<https://www.volunteermatch.org/>)



GSW Alumni Association



What
questions
do you
have?



Connect with us!

- [Office of Experiential Learning Webpage](#)
 - [Study Abroad](#)
 - [Service-Learning](#)
 - [Internships](#)
 - [Student Research](#)
 - [Windows to the World](#)

Follow us!



Georgia Southwestern
State University Office of
Experiential Learning



gsw_experientiallearning