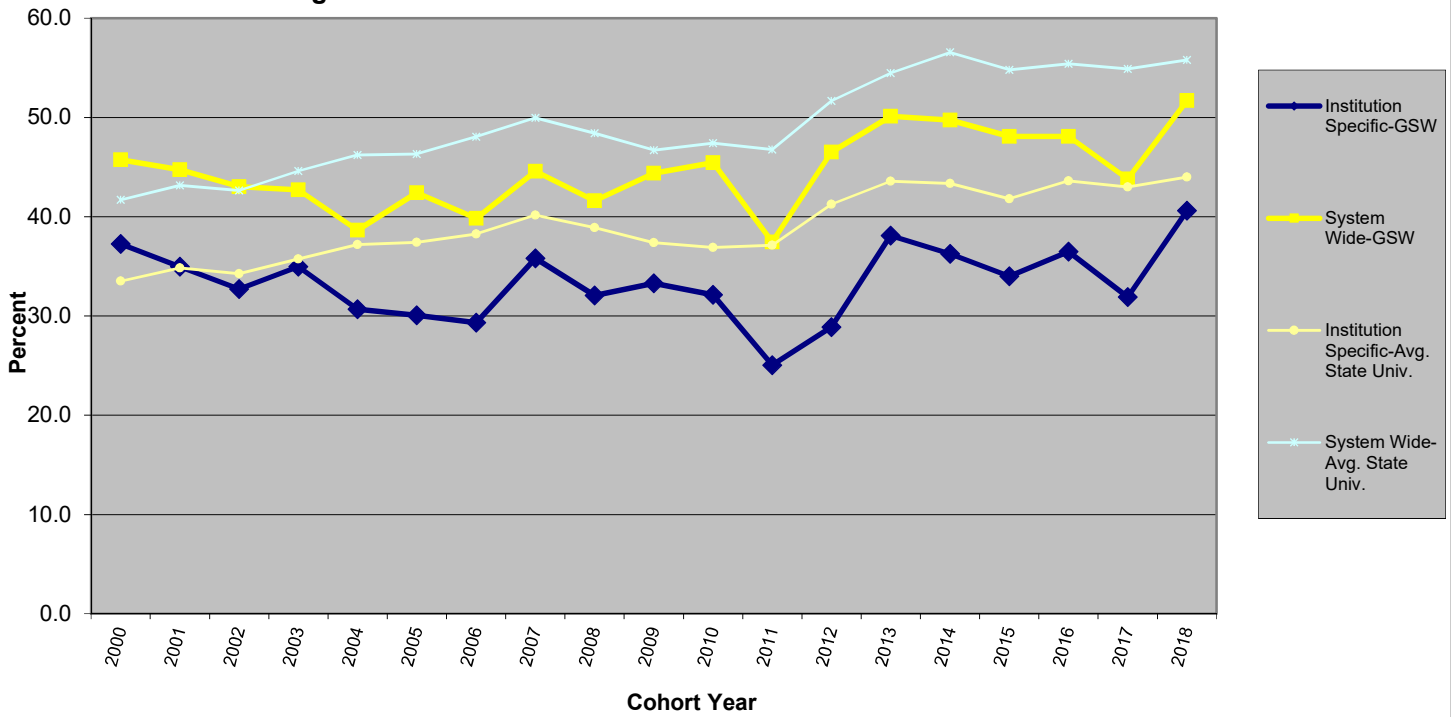


Bachelor Degree Graduation Rates for First-time Full-time Freshmen Cohort*



Cohort	Total Beginning First-time Full-time Freshmen Cohort	6-yr Graduation Rates for Bachelor's Degrees			
		GSW		All USG State Universities (including GSW)	
		Institution-Specific %	System-Wide %	Institution-Specific %	System-wide %
2000	306	37.3	45.8	33.5	41.7
2001	266	35.0	44.7	34.9	43.2
2002	330	32.7	43.0	34.3	42.6
2003	323	35.0	42.7	35.8	44.6
2004	352	30.7	38.6	37.2	46.2
2005	356	30.1	42.4	37.4	46.3
2006	399	29.3	39.9	38.3	48.1
2007	388	35.8	44.6	40.2	50.0
2008	418	32.1	41.6	38.9	48.4
2009	435	33.3	44.4	37.4	46.7
2010	473	32.1	45.5	36.9	47.4
2011	387	25.1	37.5	37.1	46.8
2012	374	28.9	46.5	41.3	51.7
2013	349	38.1	50.1	43.6	54.5
2014	386	36.3	49.7	43.4	56.6
2015	374	34.0	48.1	41.8	54.8
2016	474	36.5	48.1	43.6	55.4
2017	445	31.9	43.8	43.0	54.9
2018	406	40.6	51.7	44.0	55.8

* Cohort includes students who enrolled for the first-time during fall semester and those enrolled fall who were enrolled for the first-time during the previous summer term. Graduation rates are time-and-one-half of a bachelor's program (six years), which is the national standard for graduation rate reporting.