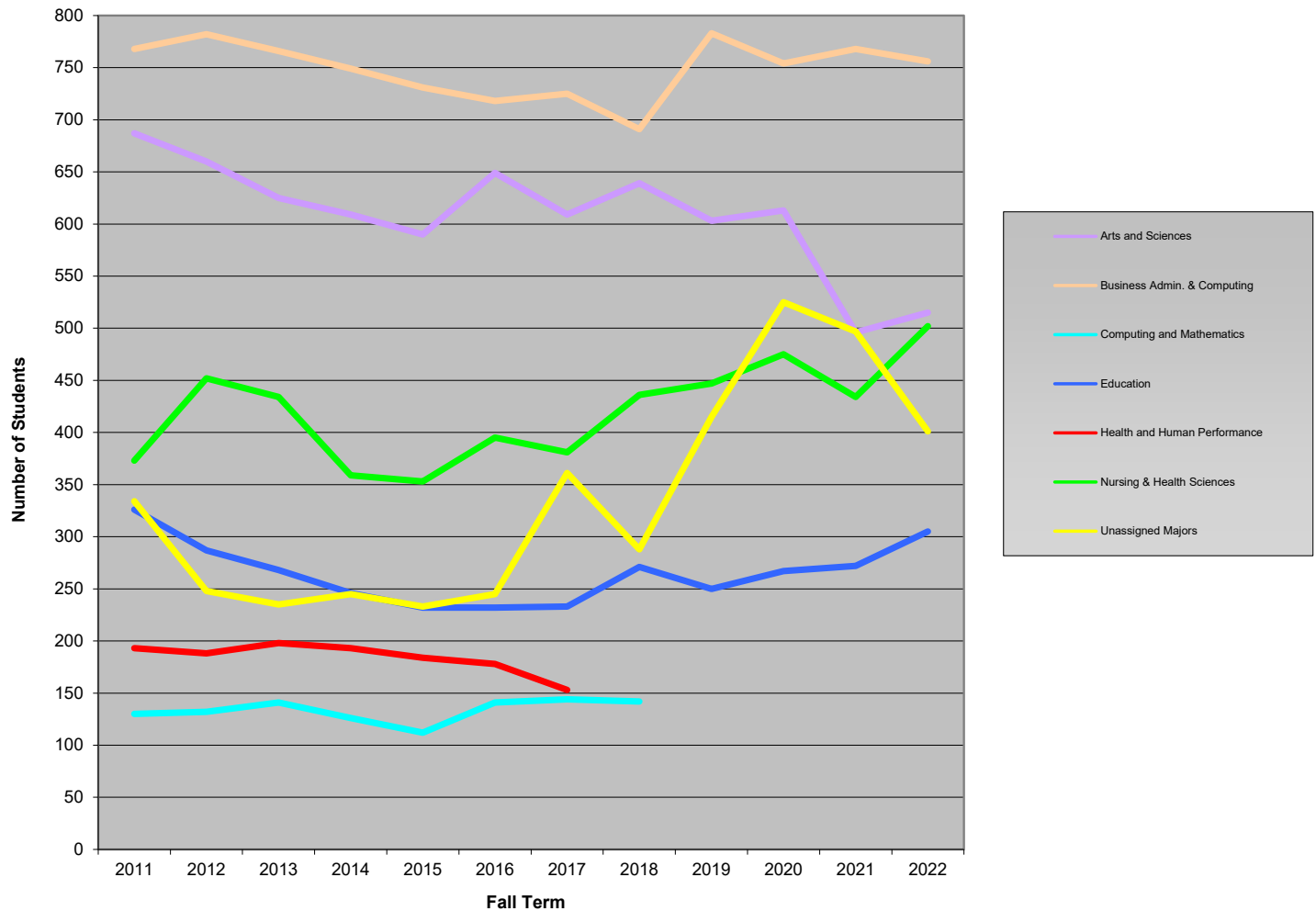


## Undergraduate Enrollment by School and Departments



	FALL TERM												1-yr % Change	10-yr % Change
	2011	2012	2013	2014	2015	2016	2017	2018	2019	2020	2021	2022		
Arts and Sciences <sup>1</sup>	687	660	625	609	590	649	609	639	603	613	496	515	-14.6	-25.0
Business Admin. & Computing	768	782	766	749	731	718	725	691	783	754	768	756	-3.4	-1.6
<i>Business Administration</i>	768	782	766	749	731	718	725	691	673	654	661	659	-2.1	-14.2
<i>Computing</i>									110	100	107	97	-11.8	0.0
Computing and Mathematics <sup>2</sup>	130	132	141	126	112	141	144	142						
<i>Computing</i>	97	102	122	115	100	124	129	128						
<i>Mathematics</i>	33	30	19	11	12	17	15	14						
Education	326	287	268	246	232	232	233	271	250	267	272	305	22.0	-6.4
Health & Human Performance <sup>3</sup>	193	188	198	193	184	178	153							
Nursing & Health Sciences	373	452	434	359	353	395	381	436	447	475	434	502	12.3	34.6
<i>Nursing</i>	373	452	434	359	353	395	381	292	293	341	302	371	26.6	-0.5
<i>Health Sciences</i>								144	154	134	132	131	-14.9	
Unassigned Majors <sup>4</sup>	334	248	235	245	233	245	361	288	415	525	497	401	-3.4	20.1
<b>Total Undergraduates</b>	<b>2811</b>	<b>2749</b>	<b>2667</b>	<b>2527</b>	<b>2435</b>	<b>2558</b>	<b>2606</b>	<b>2467</b>	<b>2498</b>	<b>2634</b>	<b>2467</b>	<b>2479</b>	<b>-0.8</b>	<b>-11.8</b>

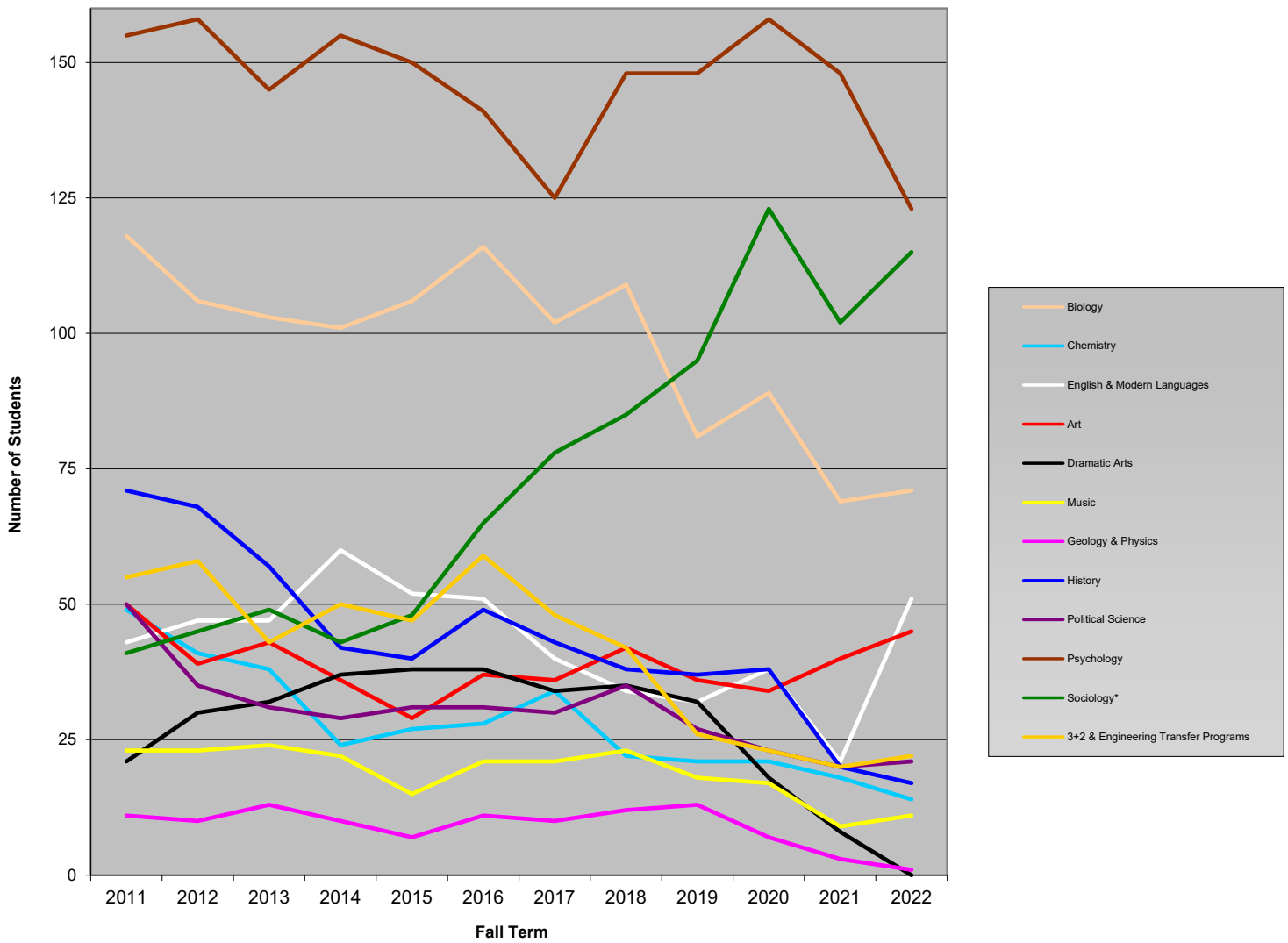
1. Totals for all departments in the School of Arts and Sciences can be found on the next chart.

2. Beginning in Fall 2019, Computing became part of the College of Business Administration and Mathematics became part of Arts and Sciences.

3. Beginning in Fall 2018, Exercise Science became part of Health Sciences and Health and PE became part of Education.

4. Unassigned majors include undeclared majors, focus areas, learning support, transient, dual enrollment, and personal development majors.

## Undergraduate Enrollment by School of Arts & Sciences\* Departments



	FALL TERM												1-yr % Change	10-yr % Change
	2011	2012	2013	2014	2015	2016	2017	2018	2019	2020	2021	2022		
Biology	118	106	103	101	106	116	102	109	81	89	69	71	2.9	-33.0
Chemistry	49	41	38	24	27	28	34	22	21	21	18	14	-22.2	-65.9
English & Modern Languages	43	47	47	60	52	51	40	34	32	38	21	51	142.9	8.5
Art	50	39	43	36	29	37	36	42	36	34	40	45	12.5	15.4
Dramatic Arts	21	30	32	37	38	38	34	35	32	18	8	0	-100.0	-100.0
Music	23	23	24	22	15	21	21	23	18	17	9	11	22.2	-52.2
Geology & Physics	11	10	13	10	7	11	10	12	13	7	3	1	-66.7	-90.0
History	71	68	57	42	40	49	43	38	37	38	20	17	-15.0	-75.0
Political Science	50	35	31	29	31	31	30	35	27	23	20	21	5.0	-40.0
Psychology	155	158	145	155	150	141	125	148	148	158	148	123	-16.9	-22.2
Sociology*	41	45	49	43	48	65	78	85	95	123	102	115	12.7	155.6
3+2 & Engineering Transfer Programs	55	58	43	50	47	59	48	42	26	23	20	22	10.0	-62.1
General Studies Program						2	8	14	23	13	14	19	35.7	
Mathematics**									14	11	4	5	25.0	
<b>Total Arts and Sciences</b>	<b>687</b>	<b>660</b>	<b>625</b>	<b>609</b>	<b>590</b>	<b>649</b>	<b>609</b>	<b>639</b>	<b>603</b>	<b>613</b>	<b>496</b>	<b>515</b>	<b>3.8</b>	<b>-22.0</b>

\*Includes criminal justice majors beginning in fall 2015.

\*\*Mathematics moved from the School of Computing & Mathematics to the College of Arts and Sciences beginning fall 2019.