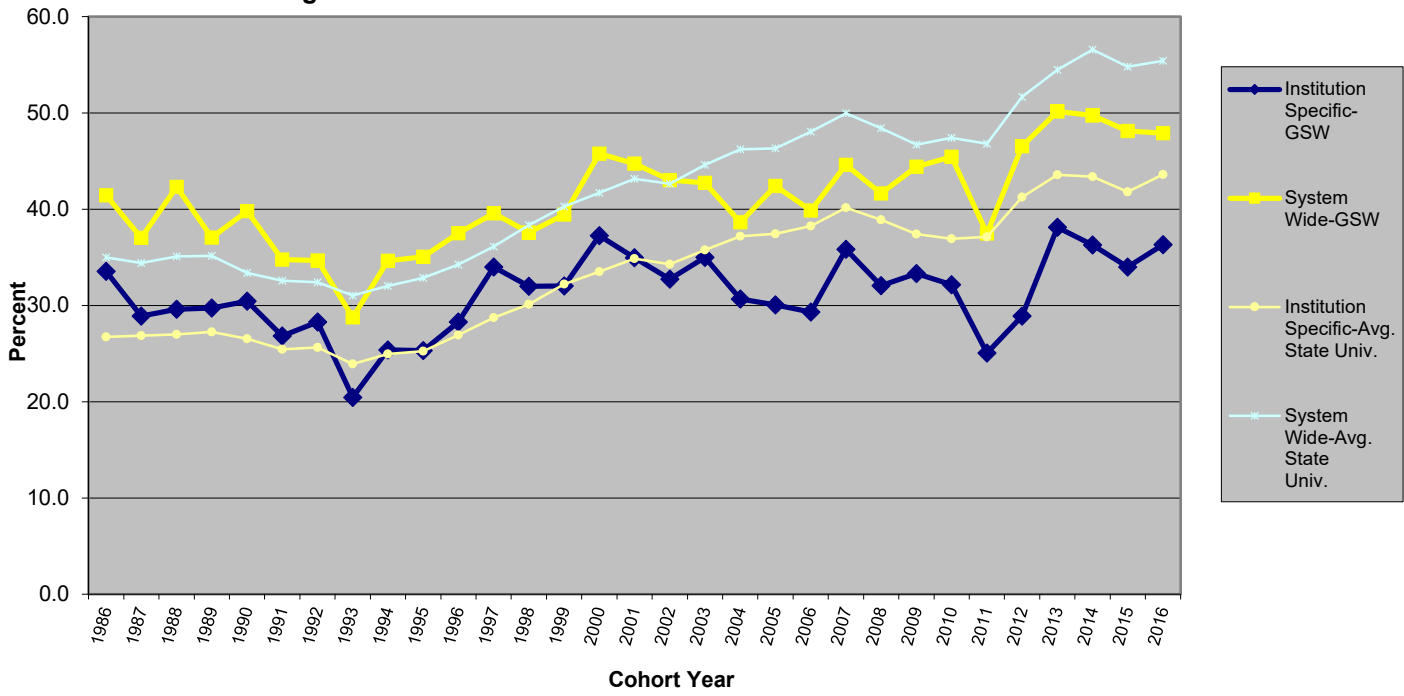


Bachelor Degree Graduation Rates for First-time Full-time Freshmen Cohort*



Cohort	Total Beginning First-time Full-time Freshmen Cohort	6-yr Graduation Rates for Bachelor's Degrees			
		GSW		All USG State Universities (including GSW)	
		Institution-Specific %	System-Wide %	Institution-Specific %	System-wide %
1986	304	33.6	41.5	26.7	35.0
1987	308	28.9	37.0	26.9	34.4
1988	338	29.6	42.3	27.0	35.1
1989	286	29.7	37.1	27.3	35.2
1990	299	30.4	39.8	26.6	33.4
1991	302	26.8	34.8	25.5	32.6
1992	375	28.3	34.7	25.6	32.4
1993	313	20.5	28.8	23.9	31.0
1994	280	25.4	34.6	24.9	32.0
1995	308	25.3	35.1	25.3	32.9
1996	304	28.3	37.5	26.9	34.3
1997	412	34.0	39.6	28.7	36.1
1998	322	32.0	37.6	30.1	38.3
1999	256	32.0	39.5	32.2	40.3
2000	306	37.3	45.8	33.5	41.7
2001	266	35.0	44.7	34.9	43.2
2002	330	32.7	43.0	34.3	42.6
2003	323	35.0	42.7	35.8	44.6
2004	352	30.7	38.6	37.2	46.2
2005	356	30.1	42.4	37.4	46.3
2006	399	29.3	39.9	38.3	48.1
2007	388	35.8	44.6	40.2	50.0
2008	418	32.1	41.6	38.9	48.4
2009	435	33.3	44.4	37.4	46.7
2010	473	32.1	45.5	36.9	47.4
2011	387	25.1	37.5	37.1	46.8
2012	374	28.9	46.5	41.3	51.7
2013	349	38.1	50.1	43.6	54.5
2014	386	36.3	49.7	43.4	56.6
2015	374	34.0	48.1	41.8	54.8
2016	474	36.3	47.9	43.6	55.4

* Cohort includes students who enrolled for the first-time during fall semester and those enrolled fall who were enrolled for the first-time during the previous summer term. Graduation rates are time-and-one-half of a bachelor's program (six years), which is the national standard for graduation rate reporting.